



THE WAVE

MONTHLY NEWSLETTER



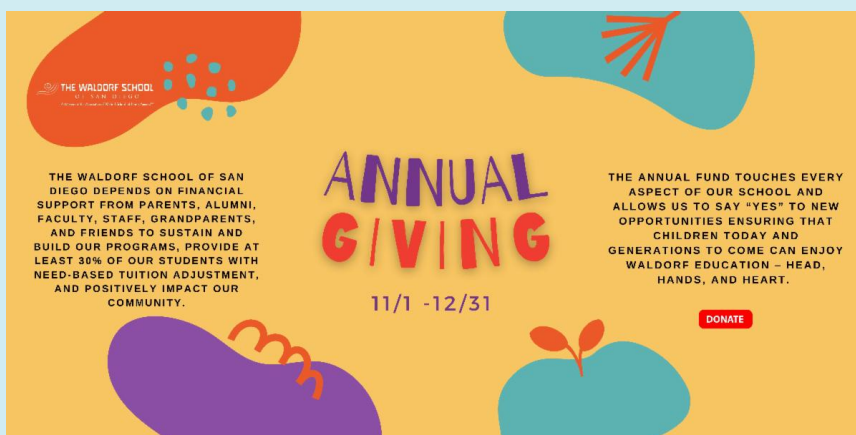
2022 | It's the year we all got back together in-person!

It hasn't just been the year that the students moved back indoors; it's also been the year that we've welcomed families back to campus - and, oh, have the activities been joyous and abundant. Here is a brief review of just a few of the highlights from the first half of the school year.

THE HEADLINES



One of the most beloved festivals at WSSD is back! Get your tickets now for petting zoo wristbands, preferred parking and tokens good for all purchases throughout the day. Entry is free and everyone is invited - so please invite your friends, family and neighbors!



ANNUAL GIVING is happening now!

[Donate Today](#)

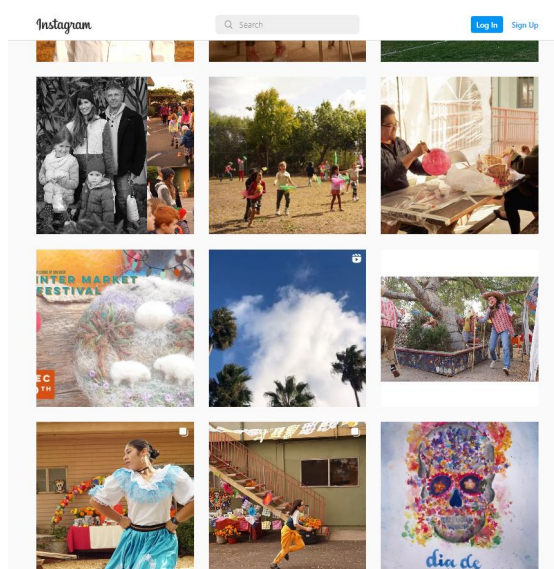
STAY CONNECTED



The Waldorf Way Podcasts

We have many episodes on the way! While they are all getting edited, please enjoy some of the recent episodes from the link below.

[PODCAST EPISODES](#)



School Instagram

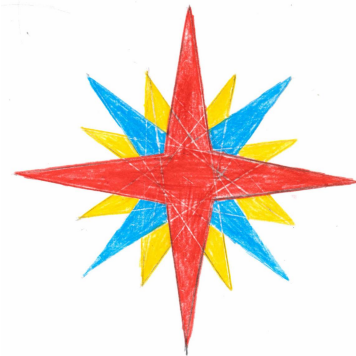
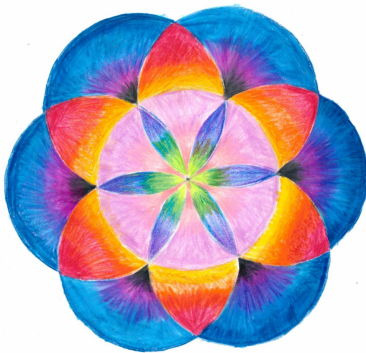
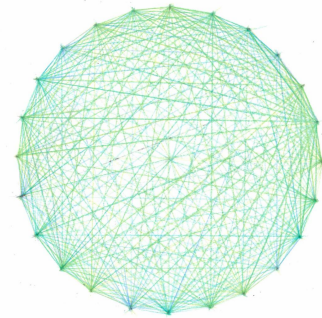
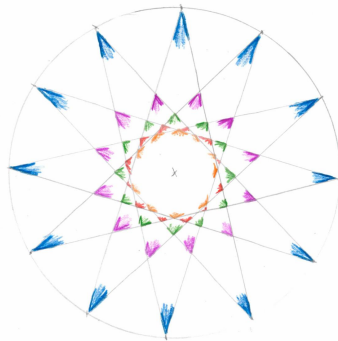
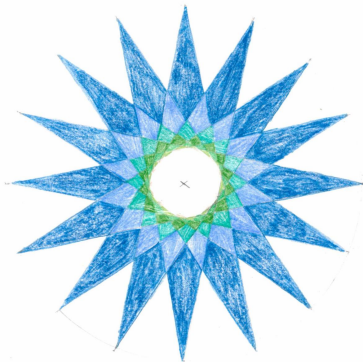
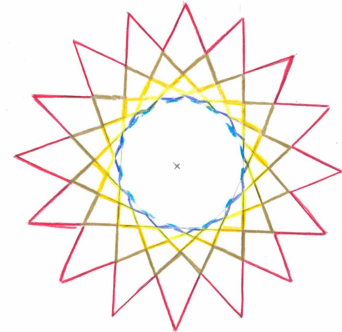
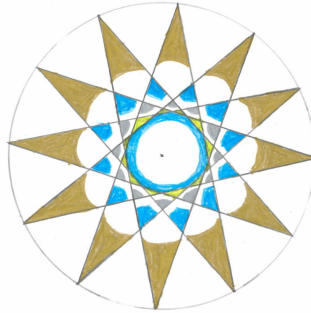
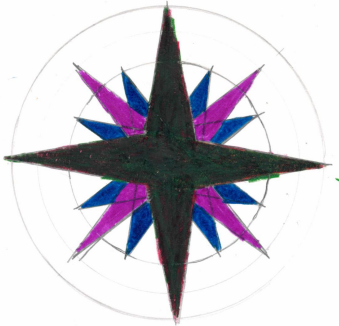
Need more frequent updates of WSSD goings-on than the newsletter has to offer? Then you should hop over to the school's IG, where we share almost daily. Tag, share, like and follow!

[WALDORF INSTAGRAM](#)

SIXTH GRADE GEOMETRY

with Bonnie Holden

This work brings to the students the ideas of cause & effect, the laws of nature, and the beauty of order.



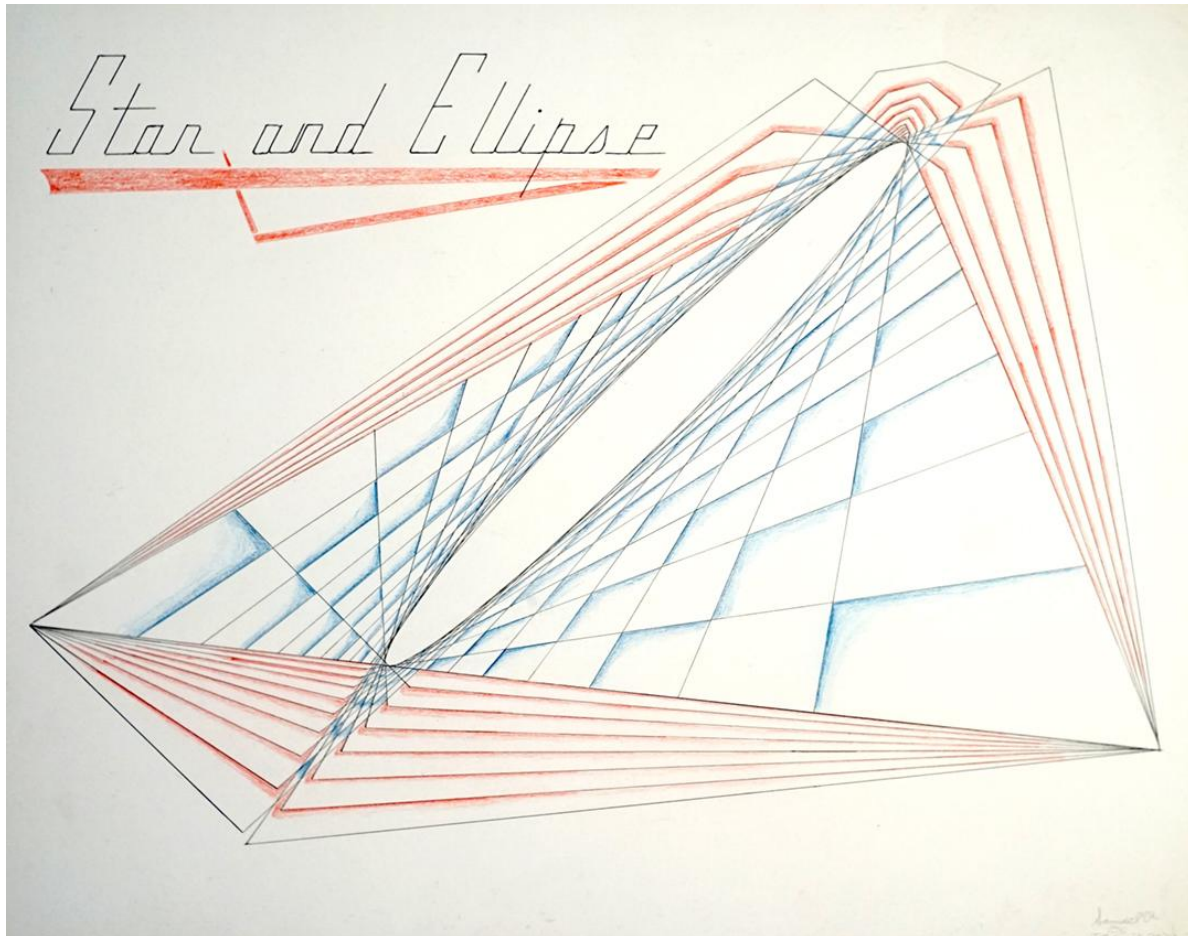
ELEVENTH GRADE PROJECTIVE GEOMETRY

with Amelia Vance

In October, the 11th grade studied projective (non-Euclidean) geometry, an incredible field of geometry that, outside of advanced mathematical studies, is only taught in Waldorf high schools. Projective geometry deals with the elements of space (points, lines, and planes) in their entirety and infinite magnitude. As many of the elements in play are invisible and intangible, this requires a high level of imaginative capability. The field asks questions like, "What happens to the point of

intersection when lines are parallel?" and "What happens to a form when one point or line is at infinity?" Students who study this subject strengthen their ability to think and reason abstractly and to see beyond the static into the movement of all complete forms. Projective Geometry is taught in 11th grade as students are emerging from the inward/self-focus of the 16 year change towards a greater sympathy with the universe around them with a new ability to see what is invisible to the eye.

At the end of the course, the students all pursue an independent project, asking their own questions such as, "What happens to a quadrangle net when it is created on a sphere?", "How many unique hexagons can be inscribed in a circle?" and "What happens when you perspective points around a star?" It is an opportunity for students to discover something new - the more unique the question, the more likely that the answer has never been found before!





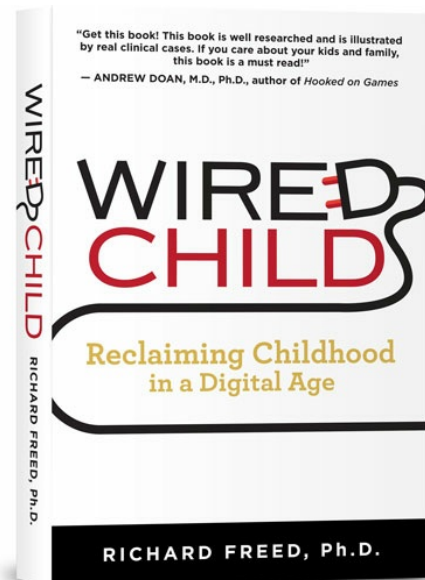
RECOMMENDED READING

from Mary Carmichael

How Waldorf School Media Policy Fosters Children's Healthy Development

by Richard Freed

With our recent experience through the lockdown, we all may have been forced to developed new routines and behaviors - some good and some bad. Some that served a purpose, and now that school is all back in-person, some that may no longer be useful. Now, therefore, is a good time to take inventory of our students use of media. WSSD's Education Support and Morning Glory Teacher, Mary Carmichael recommends the following article written by [Richard Freed](#), author of *Wired Child*: Reclaiming Childhood in a Digital Age.



"My clinical practice is increasingly a forum for children and teens...[article continued](#).

BOARD ACKNOWLEDGEMENT

We want to thank a few Board Members that have stepped off the board but served the school in a big way while they were here.

April House: Thank you very much for supporting us on some HR efforts as well as lending a strong calm presence to our Strategic Planning committee. Relaunching this committee is so vital to our long-term stability and your input was greatly appreciated.

Carlos Meier: Thank you for serving on the Finance Committee and lending your financial expertise to help us navigate our transition into our new outsourced efforts.

Erika Larkins: Thank you for serving on the Governance Committee. Collecting input from all realms of the school is an important and sometimes challenging task. Thank you for the countless hours you put into this effort.

Thank you for serving on the board and supporting many additional efforts not listed above. We are incredibly grateful for your service to our school.

NOW OPEN!



The
Snake & Lily
School Store

We would like to invite you back to The Snake & Lily School store. It's been a couple years - being shutdown since the fire, but S&L is open again!

Our mission is to support parents in bringing Waldorf pedagogy and philosophy into the home. The store is curated with items that support and facilitate reverence for nature and made of natural materials. We have also partnered up with our creative parent community and now carry their wonderful creations in the store.

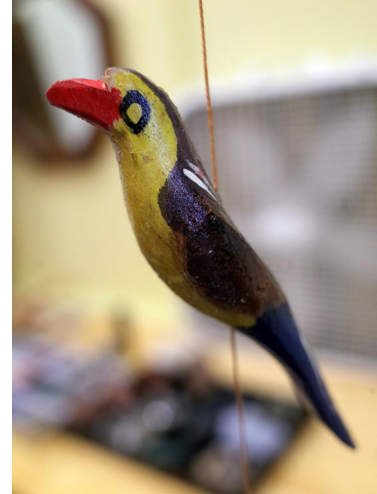
We are very excited to bring back our Coffee & Tea Cart! You can purchase a Coffee & Tea Punch Card from us.

We invite you to gather with us over a cup of coffee or tea. This is a beautiful opportunity to build community, to hold space, and to deepen our bonds within the Waldorf family.

We look forward to seeing your beautiful faces!

~ The Snake & Lily Crew

p.s. be sure to also give the shop a **follow** on instagram.



FUNDRAISER REPORTS



Our goal for this event was \$50,000. We made **\$32,397**. But more importantly, we achieved the goal of bringing the community back together again and share our open campus!



\$1,000 of the funds raised will go to campus beautification when tents come down and the rest to the bottom line to close the budget deficit brought on by COVID impacts.

Again, we want to recognize all the sponsors of the Garden Gala 2022 event! Of course, we are also grateful to all the staff and parent volunteers who helped make this return-to-campus event happen.

Stay tuned for all the fun recap photos of this event in the next issue of the The Wave and on Instagram.



SATURDAY
OCTOBER 19TH
3:30 - 7:30 PM

WOODS
8TH ANNUAL
**WANDERER'S
WAY**

\$15

**THE WALDORF SCHOOL
OF SAN DIEGO**
A Waldorf School of the Waldorf Education

**GOLINA
CAMPUS**

Proceeds go to the 11th Grade Service Trip to Costa Rica.
Join us for a stroll through this magical world of arts.
Children through 4th Grade welcome.
Sign up on ParentSquare or e-mail office@waldorfsd.org.
Dress in costume, rain or shine.

Wanderer's Way

The 11th Grade Fundraiser was a success! This one-day event raised a whopping **\$5312** - surpassing all previous years!

SPORTS!

With the World Cup going on, do you have football fever? At the high school campus, a debate began on who is the greater footballer. Responses were split evenly so the poll was posted on social media and the results were 43% (Pele) and 57% (Messi). What do you all think?

Who is the greater footballer?

Messi

Pele

Competative athletics are abundant at the school this school year, with Surf Club, Flag Football, Volleyball and Soccer. Be sure to follow Instagram and look out on ParentSquare for upcoming games and results. Go Waves!



SCHOOL SONG

updated

SCHOOL SONG

Of All Created Things

Of all created things of earth and sky,
of God and us,
Things lowly and things high.
We sing this day, with thankful hearts and say,
Alleluia, Alleluia.

Of light and darkness and the colors seven,
Stretching their rainbow bridge from earth to
heaven.
We sing this day, with thankful hearts and say,
Alleluia, Alleluia.

Of creatures all, the eagle in its flight,
The patient ox, the lion that trusts its might,
We sing this day, with thankful hearts and say,
Alleluia, Alleluia.

With our hand outstretched for service high,
Courage at heart,
truth in our steadfast eye,
We sing this day with thankful hearts and say,
Alleluia, Alleluia.

SHOE DRIVE



SHOE DRIVE
November 17th
- December 4th



SHOE DRIVE
November 17th
- December 4th



SHOE DRIVE

November 17th - December 4th

Here comes the season to be thankful and here comes the season of giving. With MLK Day on January 16th, we can also consider a season of service soon upon us.

"Everybody can be great...because anybody can serve." - Dr. Martin Luther King Jr.

At WSSD, we strive to teach our students to be "stewards of social change." And one of several activities planned for this school year's MLK celebration is a schoolwide shoe drive. The shoes collected will benefit our immediate neighbors and friends through **Monarch School** in Logan Heights (education for students living through the challenges of homelessness) and **Sharia's Closet** (free emergency clothing) in City Heights. Each organization have different sizes of needs. After the drive deadline of 12/4, shoes will be categorized and the first set will be delivered to Monarch on 12/6 and the second set on January 15th or 16th by some of our HS Social Justice students and Community Service students.

We hope this gives you plenty of time to dig through your closets, garages, and storage units to give any shoes that are still in good-to-great condition to someone in need.

UPCOMING

December

- 2 EC Winter Spiral
- 10 Winter Market and Festival
- 12 Board of Trustees Meeting
- 15-16 Winter Assembly
- 16 Last Day of School Grades 1-12 (early dismissal)
- 23 Start of Winter Break (No School 12/17-1/3)
- 31 Annual Giving Ends

AND MORE



Coach Thomas' podcast is going strong; weekly episodes up to #60 now!

A Long Way from the Block - "Stories of how passion and craft take us to different corners of the world."

Episode #60 - How can I reach the part of them that wants to awaken with Kaira Jewel Lingo.

Check out this as well as past interviews and conversations [here](#).



The Waldorf School of San Diego | 3547 Altadena Avenue, San Diego, CA 92105

[Unsubscribe office@waldorfsandiego.org](mailto:office@waldorfsandiego.org)

[Update Profile](#) | [Constant Contact Data Notice](#)

Sent by office@waldorfsandiego.org in collaboration with



Try email marketing for free today!